

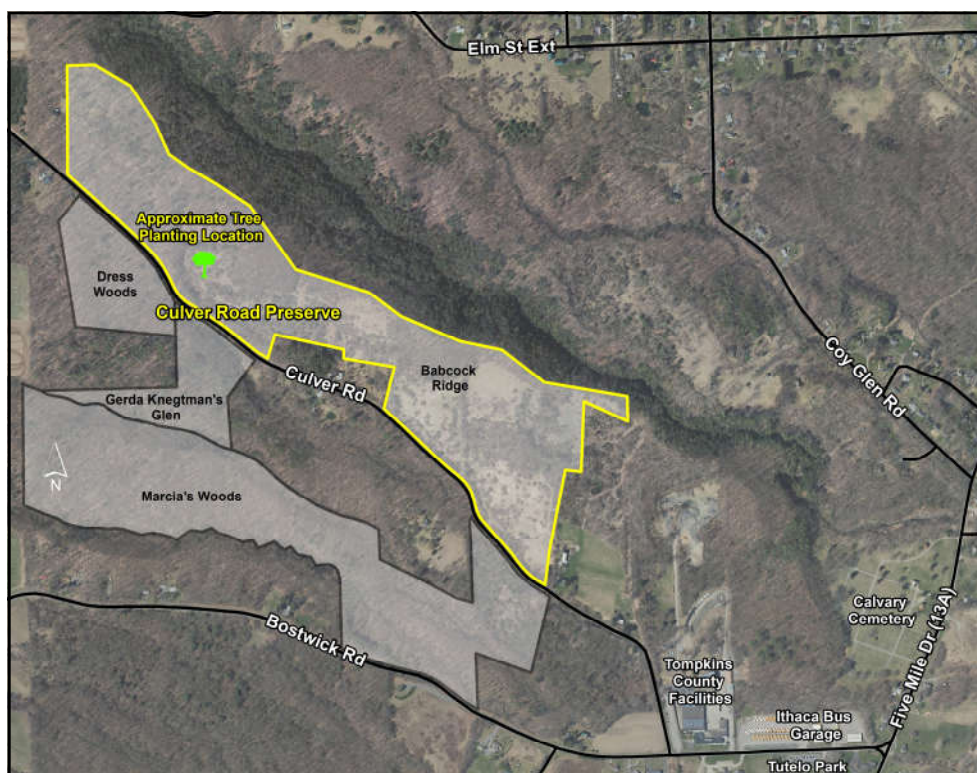
*The Town of Ithaca Conservation Board  
invites you to join in  
a tree planting in honor of the  
**Primitive Pursuits**  
2020 Recipient  
of the Richard B. Fischer  
Environmental Conservation Award*

***Sunday, May 23, 2021 at Culver Road Preserve**  
10:00 AM Presentation and Tree Planting  
Please bring your own shovel or other hand tools for planting  
small potted seedling trees*

---

Primitive Pursuits ([www.primitivepursuits.com](http://www.primitivepursuits.com)) is being honored for teaching Ithacans how to live gently and respectfully in nature. We especially value their dedication helping newer generations practice ways to live outdoors in sustainable relations to earth and our neighbors. We believe their pursuit of a Haudenosaunee mindful stewardship of natural areas can make Ithaca's environment healthier, honoring the original inhabitants and caretakers of this place.

---



**Directions:**

The award presentation and tree planting will occur in the Town of Ithaca's Culver Road Preserve, located on Culver Road. From Five Mile Drive (NYS Route 13A), turn onto Bostwick Road and continue past the Ithaca School Bus Garage and Tompkins County facilities, turn right onto Culver Road and continue up hill to the preserve. There is no parking lot at the preserve, so please park carefully along the shoulders of Culver Road.

## How to Plant the Primitive Pursuits Fischer Award Hazelnut Trees

Hazelnuts require two trees for proper pollination to produce nuts. They must be able to receive pollen from a different tree and therefore the trees should be relatively close to each other. As we are planning to grow them as a bushes, they can be as close as 6 feet apart.

Remove grass and vegetation from each flagged planting spot with a shovel or garden pick. Town staff will make sure the potted trees have been well watered prior to transplanting.



Dig each planting hole twice as wide and the same depth as the pot. Remove rocks from the soil so they won't damage the roots when backfilling. Set the rocks to one side, separate from the soil heaped in one pile.

Fill the planting hole with water. Wait until the water soaks into the soil. Remove the tree gently from its pot, without damaging trunk or roots. Slide the roots into the planting hole, arranging loose roots so they spread out evenly. Be careful to avoid damaging the moist, tender roots. You want the tree to be even or slightly lower than the natural soil surface and you want the soil to be at the same level on the stem as it was in the pot.

Backfill with the excavated soil. Tamp the soil over the roots gently and water thoroughly now to eliminate air pockets. Use more water than you think you should! Air pockets will harm the tree.

Add a 4-inch layer of mulch around the tree, pulling it back 4 inches from the trunk. Mulch helps conserve water, maintain soil moisture, and hinder weed growth. The rocks from the hole can be arranged in a circle around the mulch to keep it from washing away.

Protect planted tree with deer browse prevention tube, staked to post hammered into edge of filled hole the tree's in now.



Soak soil around young trees thoroughly with fertilized water. The Town Parks crew will come to water once or twice a week, especially during dry periods, adding enough to soak the tree roots and surrounding ground.

These hazelnuts may be maintained as small trees or multi-stemmed bushes. To grow as a tree approximately 15 feet tall, its root suckers would need to be removed, so only one main trunk grows. Once the tree is big enough it shades the base of the tree and suckers won't be able to grow. As we want bushes, we'll allow the root suckers to grow so bushes will form.